



STATE OF DELAWARE
DEPARTMENT OF TRANSPORTATION
800 BAY ROAD
P.O. BOX 778
DOVER, DELAWARE 19903

JENNIFER COHAN
SECRETARY

VIA WEBSITE POSTING

February 14, 2018

Contract No. T201753109.02
Federal Aid Project No. DE-2017-001
Lewes Park & Ride and Maintenance Facility-Phase 2
Sussex County

Ladies and Gentlemen:

Enclosed is Addendum No. 1 for the referenced contract consisting of the following:

1. The Bid Proposal Cover, revised, to be substituted for the same page in the Proposal.
2. Seven (7) pages, Appendix-A, Section 231126 - Facility Liquefied-Petroleum Gas Dispensing System, revised, to be substituted for the same pages in the Proposal.
3. The following Plan Sheets have been revised and replaced: 5, 6, 110, 169, 170 and 172.

Plan Sheets 5&6: The bus exit will consist of asphalt not concrete

Plan Sheet 110: Vehicle Lifts have been removed

Plan Sheet 169: Removal of three (3) cameras

Plan Sheet 170: Adding six (6) cameras

Plan Sheet 172: Removing the hard wiring (data) to the vending machines and adding card readers to four (4) doors.

Please note the revisions listed above and submit your bid based upon this information.

Sincerely,

~signature on file~

Robert A. Kovacs
Competitively Bid Contracts Coordinator
Delaware Department of Transportation

STATE OF DELAWARE



DEPARTMENT OF TRANSPORTATION

BID PROPOSAL

for

CONTRACT T201753109.02

FEDERAL AID PROJECT NO. DE-2017-001

CFDA NO. 20.509 & 20.526

Lewes Park & Ride and Maintenance Facility-Phase 2

RE-ADVERTISEMENT

This Contract Was Previously Advertised & Not Awarded

Sussex County

ADVERTISEMENT DATE: February 9, 2018

**PROSPECTIVE BIDDERS ARE ADVISED THAT THERE WILL BE A MANDATORY PRE-BID MEETING
WEDNESDAY FEBRUARY 21, 2018 AT 2:00 P.M. IN THE DeIDOT ADMINISTRATION BUILDING,
800 BAY ROAD, DOVER, DELAWARE, 19903.**

COMPLETION TIME: 383 Calendar Days

SPECIFICATIONS FOR ROAD AND BRIDGE CONSTRUCTION
DELAWARE DEPARTMENT OF TRANSPORTATION
AUGUST 2016

Bids will be received in the Bidder's Room at the Delaware Department of Transportation's Administration Building, 800 Bay Road, Dover, Delaware prior to 2:00 P.M. local time **March 9, 2018**

SECTION 231126 - FACILITY LIQUEFIED-PETROLEUM GAS DISPENSING SYSTEM

PART 1 - GENERAL

1.1 SUMMARY

- A. Section Includes:
1. LPG auto-gas dispensing system.
 2. Pipes, tubes, and fittings.
 3. Piping specialties.
 4. Piping and tubing joining materials.
 5. Valves.
 6. Storage containers.

1.2 DEFINITIONS

- A. Exposed, Exterior Installations: Exposed to view outdoors or subject to outdoor ambient temperatures and weather conditions.
- B. LPG: Liquefied-petroleum gas.

1.3 PERFORMANCE REQUIREMENTS

- A. Minimum Operating-Pressure Ratings:
1. For Piping Containing Only Vapor (Schedule 80 Carbon Steel):
 - a. Piping and Valves: ~~125~~ 250 psig unless otherwise indicated.
 2. For Piping Containing Liquid (Schedule 80 Carbon Steel):
 - a. Piping between Shutoff Valves: 350 psig unless otherwise indicated.
 - b. Piping Other Than Above: 250 psig unless otherwise indicated.
 - c. Valves and Fittings: 250 psig unless otherwise indicated.

1.4 ACTION SUBMITTALS

- A. Product Data: For each type of the following:
1. Piping specialties.
 2. Valves. Include pressure rating, capacity, settings, and electrical connection data of selected models.
 3. Pressure regulators. Indicate pressure ratings and capacities.
 4. Dielectric fittings.

Contract No. T201753109

5. Storage containers.
 6. Dispenser with all associated components, nozzle, hose, valve.
 7. Pump and all associated components.
 8. Mass Flow meters.
 9. Skid package dispensing components for complete auto dispensing system.
- B. Shop Drawings: For LPG auto-gas dispensing system piping layout. Include plans with piping layout and details for fabrication of skid mounted factory installed components including storage tanks, piping, pump, pump controller, dispenser, and valves. Show interconnecting piping between tanks, pump and dispenser and interconnecting wiring.
1. Shop Drawing Scale: 1/8 inch per foot.
- C. Delegated-Design Submittal: For LPG piping and equipment indicated to comply with performance requirements and design criteria, including analysis data signed and sealed by the qualified professional engineer responsible for their preparation. Contractor shall provide (size and quantity as indicated on drawings) aboveground steel LPG propane tank constructed in compliance with ASME Boiler and Pressure Vessel Code and NFPA 58. Contractor to provide manufacturer's standard anchoring components, for LPG dispensing system that is to be mounted on factory installed skid package.
- 1.5 INFORMATIONAL SUBMITTALS
- A. Qualification Data: For qualified professional engineer.
 - B. Welding certificates.
 - C. Field quality-control reports.
- 1.6 CLOSEOUT SUBMITTALS
- A. Operation and Maintenance Data: For LPG equipment and accessories to include in emergency, operation, and maintenance manuals.
- 1.7 QUALITY ASSURANCE
- A. Steel Support Welding Qualifications: Qualify procedures and personnel according to AWS D1.1/D1.1M, "Structural Welding Code - Steel."
 - B. Pipe Welding Qualifications: Qualify procedures and operators according to ASME Boiler and Pressure Vessel Code.

- C. Electrical Components, Devices, and Accessories: Listed and labeled as defined in NFPA 70, by a qualified testing agency, and marked for intended location and application.

1.8 DELIVERY, STORAGE, AND HANDLING

- A. Handling Flammable Liquids: Remove and dispose of liquids from existing LPG piping according to requirements of authorities having jurisdiction.
- B. Deliver pipes and tubes with factory-applied end caps. Maintain end caps through shipping, storage, and handling to prevent pipe end damage and to prevent entrance of dirt, debris, and moisture.

1.9 COORDINATION

- A. Coordinate sizes and locations of concrete bases with actual equipment provided.

PART 2 - PRODUCTS

2.1 PIPES, TUBES, AND FITTINGS

- A. Steel Pipe: ASTM A 53/A 53M, black steel, Schedule 80, Type E or S, Grade B.
 - 1. Malleable-Iron Threaded Fittings: ASME B16.3, Class ~~150~~ 300, standard pattern.
 - 2. Wrought-Steel Welding Fittings: ASTM A 234/A 234M for butt welding and socket welding.
 - 3. Unions: ASME B16.39, Class ~~150~~ 300, malleable iron with brass-to-iron seat, ground joint, and threaded ends.
 - 4. Forged-Steel Flanges and Flanged Fittings: ASME B16.5, minimum Class ~~150~~ 300, including bolts, nuts, and gaskets of the following material group, end connections, and facings:
 - a. Material Group: 1.1.
 - b. End Connections: Threaded or butt welding to match pipe.
 - c. Lapped Face: Not permitted underground.
 - d. Gasket Materials: ASME B16.20, metallic, flat, asbestos free, aluminum o-rings, and spiral-wound metal gaskets.
 - e. Bolts and Nuts: ASME B18.2.1, carbon steel aboveground, and stainless steel underground.
 - 5. Mechanical Couplings:
 - a. Manufacturers: Subject to compliance with requirements, provide products by one of the following:
 - 1) Dresser Piping Specialties; Division of Dresser, Inc.

Contract No. T201753109

2) Smith-Blair, Inc.

- b. Steel flanges and tube with epoxy finish.
- c. Buna-nitrile seals.
- d. Steel bolts, washers, and nuts.
- e. Steel body couplings installed underground on plastic pipe shall be factory equipped with anode.

2.2 PIPING SPECIALTIES

A. Flexible Piping Joints:

- 1. Approved for LPG service.
- 2. Stainless-steel bellows with woven, flexible, bronze, wire-reinforcing protective jacket.
- 3. Minimum working pressure of 250 psig and 250 deg F operating temperature.
- 4. Flanged- or threaded-end connections to match equipment connected and shall be capable of minimum 3/4-inch misalignment.
- 5. Maximum 36-inch length for liquid LPG lines.

B. Y-Pattern Strainers:

- 1. Body: ASTM A 126, Class B, cast iron with bolted cover and bottom drain connection.
- 2. End Connections: Threaded ends for NPS 2 and smaller; flanged ends for NPS 2-1/2 and larger.
- 3. Strainer Screen: 40-mesh startup strainer and perforated stainless-steel basket with 50 percent free area.
- 4. CWP Rating: ~~125~~ 250 psig.

C. Weatherproof Vent Cap: Cast- or malleable-iron increaser fitting with corrosion-resistant wire screen, with free area at least equal to cross-sectional area of connecting pipe and threaded-end connection.

2.3 JOINING MATERIALS

A. Joint Compound and Tape: Suitable for LPG.

B. Welding Filler Metals: Comply with AWS D10.12/D10.12M for welding materials appropriate for wall thickness and chemical analysis of steel pipe being welded.

2.4 MANUAL GAS SHUTOFF VALVES

A. See "Aboveground Manual Gas Shutoff Valve Schedule" Articles for where each valve type is applied in various services.

Contract No. T201753109

- B. General Requirements for Metallic Valves, NPS 2 and Smaller for Vapor Service: Comply with ASME B16.33.
1. CWP Rating: ~~125~~ 250 psig.
 2. Threaded Ends: Comply with ASME B1.20.1.
 3. Dryseal Threads on Flare Ends: Comply with ASME B1.20.3.
 4. Tamperproof Feature: Locking feature for valves indicated in "Underground Manual Gas Shutoff Valve Schedule" and "Aboveground Manual Gas Shutoff Valve Schedule" Articles.
 5. Listing: Listed and labeled by an NRTL acceptable to authorities having jurisdiction for valves 1 inch and smaller.
 6. Service Mark: Valves 1-1/4 inch to NPS 2 shall have initials "WOG" permanently marked on valve body.
- C. General Requirements for Metallic Valves, NPS 2-1/2 and Larger: Comply with ASME B16.38.
1. CWP Rating: ~~125~~ 250 psig.
 2. Flanged Ends: Comply with ASME B16.5 for steel flanges.
 3. Tamperproof Feature: Locking feature for valves indicated in "Underground Manual Gas Shutoff Valve Schedule" and "Aboveground Manual Gas Shutoff Valve Schedule" Articles.
 4. Service Mark: Initials "WOG" shall be permanently marked on valve body.
- D. Two-Piece, Full-Port, Bronze Ball Valves with Bronze Trim: MSS SP-110.
1. Manufacturers: Subject to compliance with requirements, provide products by one of the following:
 - a. BrassCraft Manufacturing Company; a Masco company.
 - b. Conbraco Industries, Inc.; Apollo Div.
 - c. Lyall, R. W. & Company, Inc.
 - d. McDonald, A. Y. Mfg. Co.
 - e. Perfection Corporation; a subsidiary of American Meter Company.
 2. Body: Bronze, complying with ASTM B 584.
 3. Ball: Chrome-plated bronze.
 4. Stem: Bronze; blowout proof.
 5. Seats: Reinforced TFE; blowout proof.
 6. Packing: Threaded-body packnut design with adjustable-stem packing.
 7. Ends: Threaded, flared, or socket as indicated in "Aboveground Manual Gas Shutoff Valve Schedule" Articles.
 8. CWP Rating: 600 psig.
 9. Listing: Valves NPS 1 and smaller shall be listed and labeled by an NRTL acceptable to authorities having jurisdiction.
 10. Service: Suitable for LPG service with "WOG" indicated on valve body.

2.5 DIELECTRIC FITTINGS

- A. General Requirements: Assembly of copper alloy and ferrous materials with separating nonconductive insulating material. Include end connections compatible with pipes to be joined.
- B. Dielectric Unions:
1. Manufacturers: Subject to compliance with requirements, provide products by one of the following:
 - a. Capitol Manufacturing Company.
 - b. Matco-Norca, Inc.
 - c. Watts Regulator Co.; a division of Watts Water Technologies, Inc.
 - d. Wilkins; a Zurn company.
 2. Description:
 - a. Standard: ASSE 1079.
 - b. Pressure Rating: ~~125~~ 250 psig minimum at 180 deg F.
 - c. End Connections: Solder-joint copper alloy and threaded ferrous.
- C. Dielectric Flanges:
1. Manufacturers: Subject to compliance with requirements, provide products by one of the following:
 - a. Capitol Manufacturing Company.
 - b. Matco-Norca, Inc.
 - c. Watts Regulator Co.; a division of Watts Water Technologies, Inc.
 - d. Wilkins; a Zurn company.
 2. Description:
 - a. Standard: ASSE 1079.
 - b. Factory-fabricated, bolted, companion-flange assembly.
 - c. Pressure Rating: ~~125~~ 250 psig minimum at 180 deg F.
 - d. End Connections: Solder-joint copper alloy and threaded ferrous; threaded solder-joint copper alloy and threaded ferrous.
 - e.

2.6 LPG AUTO-GAS DISPENSING SYSTEM

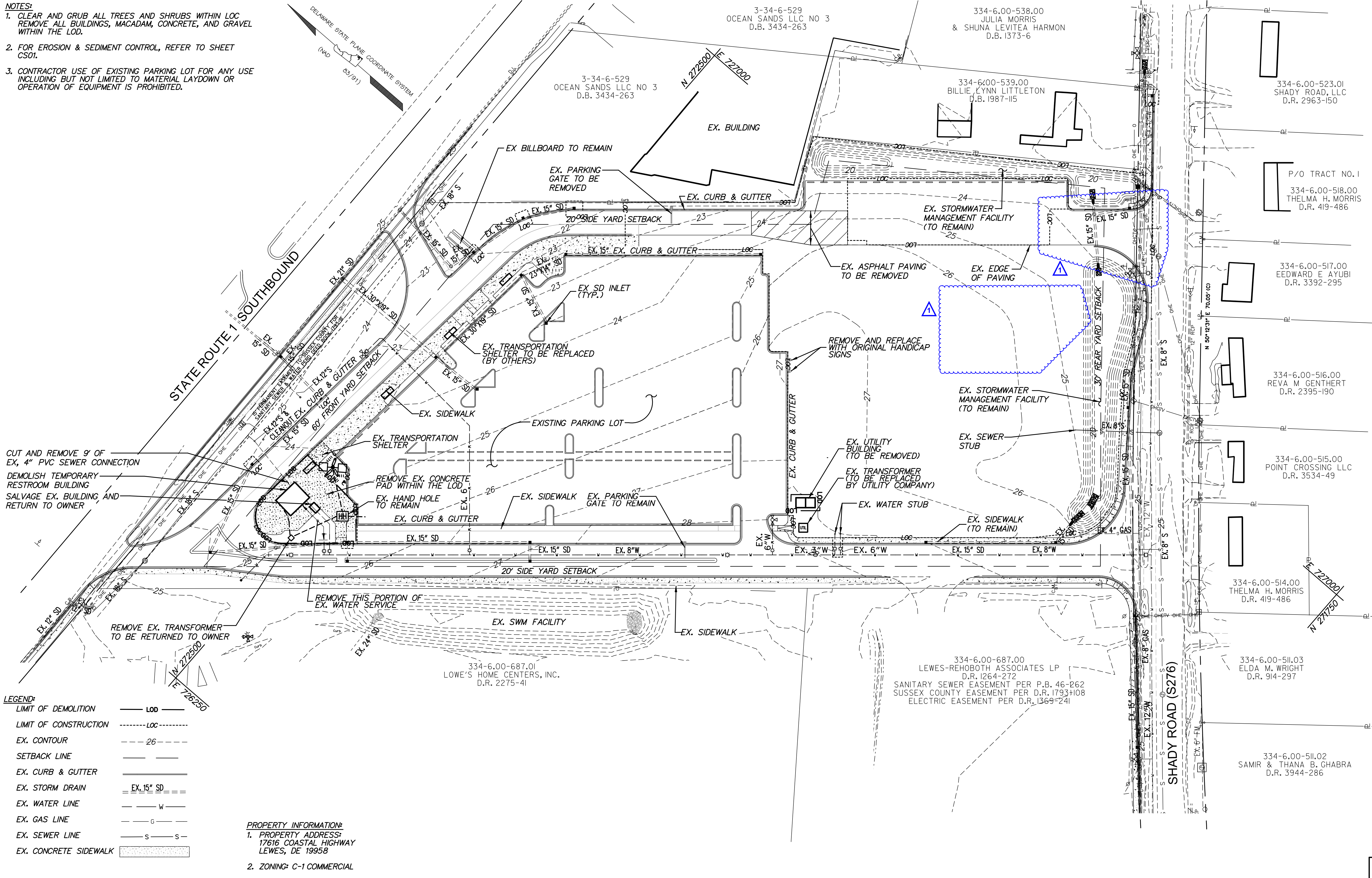
- A. Description: Factory fabricated skid mounted turn-key package auto-gas dispensing system, with (2) 1,990 gallon horizontal storage tanks, high pressure supply pump, dispenser, shut-off valves, meter, relief valves, fuel management system and interconnecting piping between tank, pump and dispenser. Provide a

Contract No. T201753109

complete LPG auto-gas dispensing system factory fabricated and installed in the field by the auto-gas manufacturer's service technician.

1. ~~Basis of Design~~ Available Manufacturers: Subject to compliance with requirements, provide ~~Industrial Propane Service, Inc. or comparable products~~ by one of the following:
 - a. Superior Energy Systems, Inc.
 - b. Industrial Propane Service, Inc.
2. Storage tank and skid to be factory fabricated, 1,990 gallon horizontal tank complying with requirements in NFPA 58 and ASME Boiler and Pressure Vessel Code and bearing the ASME label. Tanks shall be rated for 250-psig minimum working pressure.
 - a. Tank trim that includes variable liquid level gauge, fixed liquid level gauge, tank relief valves, internal safety valves, pressure gauge, fill valve, back check valves, excess flow valves and positive shut-off valves.
 - b. All liquid and vapor openings will be on the bottom of the tank. These bottom openings will include (1) 2" liquid, (1) 1 1/4" liquid, (1) 1 1/4" vapor, and (1) 3/4" vapor. The tank will include side fill capabilities and side mounted gauges.
3. Dispenser to be ~~IPS 9899KX Gasboy dispenser~~ Superior Pro 1500. The single hose dispenser will include a Liquid Controls MA4 2.5-40gpm meter, electronic display, electronic totalizer, lighted panels, stainless steel panels, hose retractor and support, dispenser shear valve, solenoid valve, pull-away valves with lead hose, ~~10' 15'~~ fill hose and ~~Gas Guard GG20~~ Staubli Fill Nozzle. The dispenser will be test pumped and calibrated prior to delivery. All components will be UL Approved for propane use.
4. Supply pump to be ~~Blackmer LGL156~~ Esbray RC25 high differential pressure pump with external ~~150~~ 200 psi bypass and 5 hp, 3 phase motor and connect to the piping system. This will include a Y-Strainer and stainless steel flex on the pump inlet.
5. Piping kit to include, 2" pump inlet piping that includes (1) 2" ~~electronic operated ball~~ valves installed after the internal valves. Piping kit with hydrostatic relief valves, shut off valves, fittings and piping to connect the (2) tanks together and connect to the pump. This will include pipe supports. Tees will be left for a future pump and future tank. All piping, tanks, and skids will be painted white
 - a. All required decals (to be installed on site), fire extinguisher, cover and bracket.
 - b. Provide owner's manual, operations guide, maintenance guide, and troubleshooting guide.

- NOTES:**
1. CLEAR AND GRUB ALL TREES AND SHRUBS WITHIN LOC REMOVE ALL BUILDINGS, MACADAM, CONCRETE, AND GRAVEL WITHIN THE LOD.
 2. FOR EROSION & SEDIMENT CONTROL, REFER TO SHEET CS01.
 3. CONTRACTOR USE OF EXISTING PARKING LOT FOR ANY USE INCLUDING BUT NOT LIMITED TO MATERIAL LAYDOWN OR OPERATION OF EQUIPMENT IS PROHIBITED.



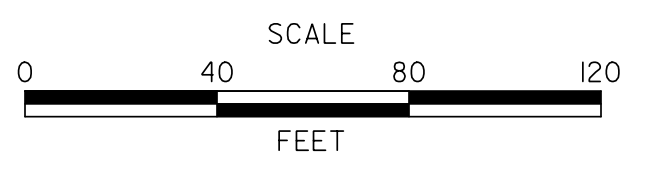
- LEGEND:**
- LIMIT OF DEMOLITION — LOD —
 - LIMIT OF CONSTRUCTION - - - - - LOC - - - - -
 - EX. CONTOUR - - - - - 26 - - - - -
 - SETBACK LINE — — — — —
 - EX. CURB & GUTTER — — — — —
 - EX. STORM DRAIN = EX. 15" SD =
 - EX. WATER LINE — — — — — W — — — — —
 - EX. GAS LINE — — — — — G — — — — —
 - EX. SEWER LINE — — — — — S — — — — —
 - EX. CONCRETE SIDEWALK [stippled pattern]

PROPERTY INFORMATION:

1. PROPERTY ADDRESS: 17616 COASTAL HIGHWAY LEWES, DE 19958
2. ZONING: C-1 COMMERCIAL

ADDENDUMS / REVISIONS

ADDENDUM 1



LEWES PARK & RIDE AND MAINTENANCE FACILITY - PHASE 2

CONTRACT	T201753109	BRIDGE NO.	
COUNTY	SUSSEX	DESIGNED BY:	PMG
		CHECKED BY:	PMG

EXISTING CONDITIONS / DEMOLITION PLAN

C-101
SHEET NO.
5
TOTAL SHTS.
189

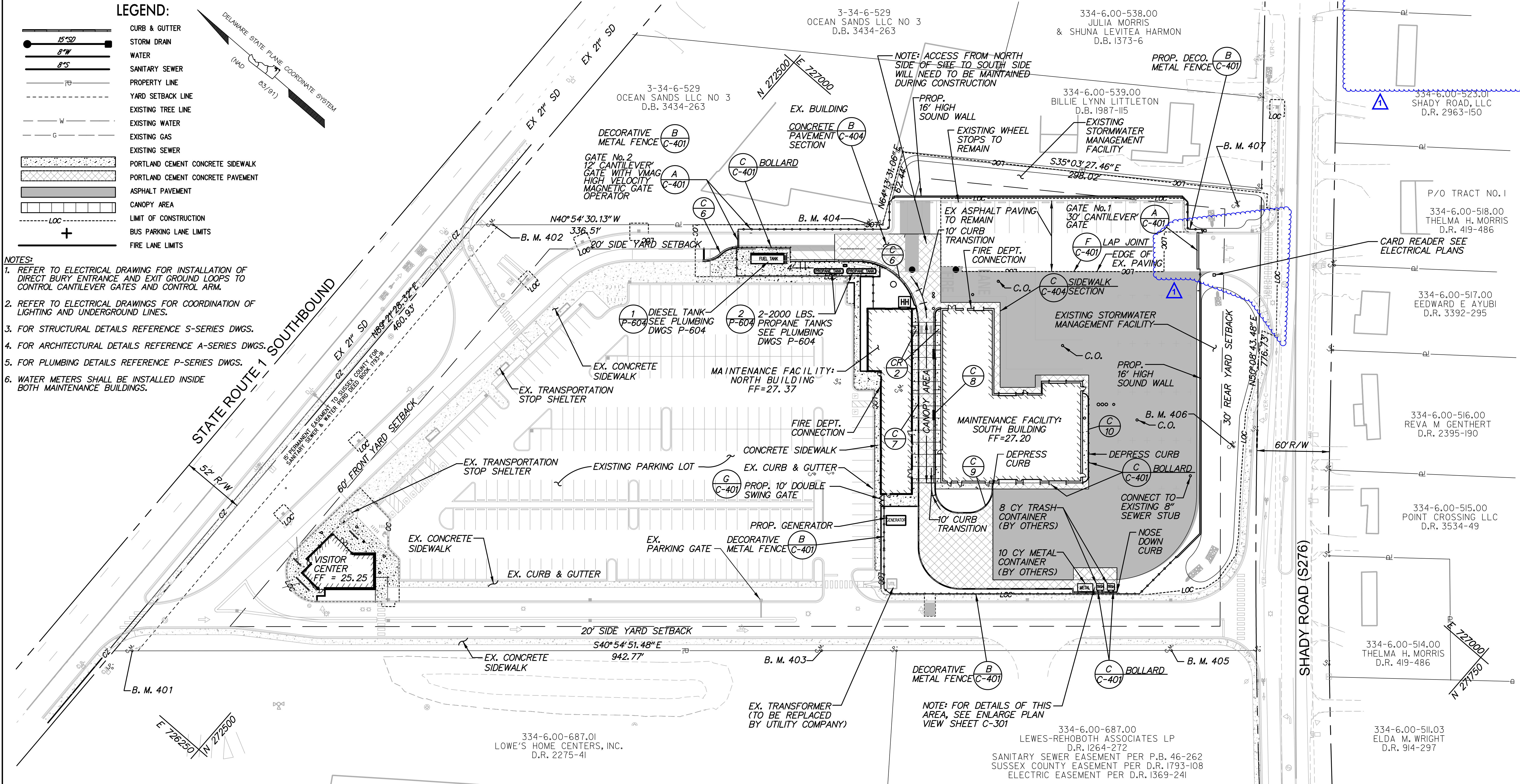


LEGEND:

	CURB & GUTTER
	STORM DRAIN
	WATER
	SANITARY SEWER
	PROPERTY LINE
	YARD SETBACK LINE
	EXISTING TREE LINE
	EXISTING WATER
	EXISTING GAS
	EXISTING SEWER
	PORTLAND CEMENT CONCRETE SIDEWALK
	PORTLAND CEMENT CONCRETE PAVEMENT
	ASPHALT PAVEMENT
	CANOPY AREA
	LIMIT OF CONSTRUCTION
	BUS PARKING LANE LIMITS
	FIRE LANE LIMITS

NOTES:

1. REFER TO ELECTRICAL DRAWING FOR INSTALLATION OF DIRECT BURY ENTRANCE AND EXIT GROUND LOOPS TO CONTROL CANTILEVER GATES AND CONTROL ARM.
2. REFER TO ELECTRICAL DRAWINGS FOR COORDINATION OF LIGHTING AND UNDERGROUND LINES.
3. FOR STRUCTURAL DETAILS REFERENCE S-SERIES DWGS.
4. FOR ARCHITECTURAL DETAILS REFERENCE A-SERIES DWGS.
5. FOR PLUMBING DETAILS REFERENCE P-SERIES DWGS.
6. WATER METERS SHALL BE INSTALLED INSIDE BOTH MAINTENANCE BUILDINGS.



PARKING TABULATIONS:

PARKING SPACE PROVIDED: 243 SPACES
 PARKING SPACES REQUIRED: 1 PER 500 SF OF FLOOR AREA
 PROPOSED FLOOR AREA = 15694 SF/500=31 SPACES REQUIRED
 HANDICAP SPACES PROVIDED: 8
 HANDICAP SPACES REQUIRED: 7

BENCH MARK INFORMATION:

POINT#	NORTHING	EASTING	ELEV.	DESCRIPTION
401	272594.8598	726275.4614	24.49	INSTALL CONCRETE MONUMENT
402	272600.0252	726736.2719	22.16	REPLACE EXISTING WOOD STAKE WITH CONCRETE MONUMENT
403	272164.8638	726648.1142	29.40	EXISTING CONCRETE MONUMENT TO REMAIN
404	272364.6158	726940.3069	22.41	REPLACE EXISTING WOOD STAKE WITH CONCRETE MONUMENT
405	271946.6363	726837.2111	26.77	EXISTING CONCRETE MONUMENT TO REMAIN
406	272017.8375	726997.9937	25.07	INSTALL CONCRETE MONUMENT
407	272145.2257	727150.6042	23.38	INSTALL CONCRETE MONUMENT

CURB SCHEDULE

NO.	ITEM DESCRIPTION / TYPE	LENGTH
C-6	P. C. C. CURB AND GUTTER, TYPE 3-8 MODIFIED	197.6'
C-7	P. C. C. CURB AND GUTTER, TYPE 3-6 MODIFIED	385.7'
C-8	P. C. C. CURB AND GUTTER, TYPE 3-6	148.4'
C-9	P. C. C. CURB AND GUTTER, TYPE 1-6	80.8'
C-10	P. C. C. CURB AND GUTTER, TYPE 3-6	79.7'

BUILDING NAME	BUILDING DESCRIPTION	AREA	STORIES / HEIGHT	SPRINKLERS	CONSTRUCTION TYPE	OCCUPANCY / USE
MAINTENANCE FACILITY: NORTH BUILDING	DRIVERS LOUNGE AND DISPATCH	4,474 SF	1 / 15'-0"	YES	II (000)	ASSEMBLY (<300)
MAINTENANCE FACILITY: SOUTH BUILDING	BUS MAINTENANCE SHOPS	11,220 SF	1 / 32'-0"	YES	II (000)	INDUSTRIAL (MINOR REPAIR GARAGE)
VISITOR CENTER	PERMANENT TOILET ROOMS AND VISITOR CENTER	2000 SF	1/25'-0"	NO	II (000)	ASSEMBLY (<300)

1. THESE STRUCTURES WILL BE PROTECTED BY AUTOMATIC SPRINKLERS IN ACCORDANCE WITH NFPA13.
2. ALL FIRE LANES, FIRE HYDRANTS, AND FIRE DEPARTMENT CONNECTION SHALL BE MARKED IN ACCORDANCE WITH THE DELAWARE STATE FIRE PREVENTION REGULATIONS.
3. LOCK BOXES REQUIRED, CONTACT LOCAL FIRE CHIEF FOR ORDERING INFORMATION AND LOCATION OF BOXES ON THE BUILDINGS.

DELAWARE DEPARTMENT OF TRANSPORTATION

SCALE
0 40 80 120
FEET

LEWES PARK & RIDE AND MAINTENANCE FACILITY - PHASE 2

CONTRACT: T201753109
 COUNTY: SUSSEX
 BRIDGE NO.:
 DESIGNED BY: DJL
 CHECKED BY: PMG

SITE PLAN

SHEET NO. 6
 TOTAL SHTS. 189

GENERAL NOTES

- A. EQUIPMENT LAYOUTS INDICATE GENERAL LOCATION OF EQUIPMENT. UNLESS SPECIFICALLY DIMENSIONED, EQUIPMENT SHALL BE INSTALLED IN GENERAL LOCATION INDICATED IN A MANNER WHICH AVOIDS CONFLICTS WITH ARCHITECTURAL, STRUCTURAL, MECHANICAL (HVAC M-SERIES), PLUMBING, AND ELECTRICAL FIXTURES.
- B. ALL EQUIPMENT SHOWN ON THESE DRAWINGS ARE BASED ON SPECIFICATIONS. MODIFICATIONS AND/OR SUBSTITUTIONS OF SAID EQUIPMENT IS SUBJECT TO COMPLETE COORDINATION BY CONTRACTOR OF ALL CONNECTIONS, SERVICES, OPENING SIZES, AND ANY OTHER CONSTRUCTION RELATED REQUIREMENTS AT THE CONTRACTOR'S COST.
- C. VERIFY AND COORDINATE ALL STRUCTURAL, MECHANICAL (HVAC M-SERIES), ELECTRICAL, PLUMBING, AND HVAC REQUIREMENTS OF EQUIPMENT WITH APPROVED MANUFACTURER PRIOR TO INSTALLATION.
- D. SEISMIC BRACE AND ANCHOR ALL EQUIPMENT, STORAGE, AND SHELVING AS REQUIRED PER MANUFACTURER'S RECOMMENDATIONS OR CODES AND PER SPECIFICATIONS.
- E. DO NOT INSTALL EQUIPMENT WITHOUT APPROVED SHOP DRAWINGS.

EQUIPMENT ABBREVIATIONS

- LC LUBE COMPRESSOR
- SH SHOP EQUIPMENT
- ST STORAGE EQUIPMENT
- TS TIRE SHOP EQUIPMENT
- VL VEHICLE LIFT EQUIPMENT
- VW VEHICLE WASH EQUIPMENT

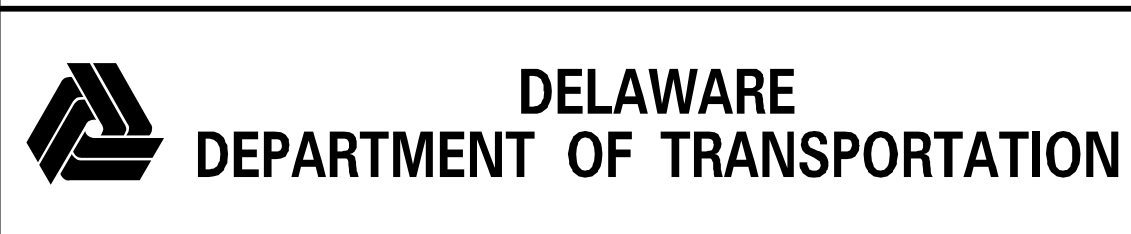
EQUIPMENT SCHEDULE

Mark #	Description	Spec Section	Remarks
CC308	Washer, parts, automatic, front loading	111100	
LC113	Press, oil filter	111100	
SH213	Buffer/grinder, 10", w/dust collector	111100	
SH237	Drill press, 20 inch, variable speed	111100	
SH255	Press, 50 ton, electric/hydraulic	111100	
TS201	Mounter/ demounter, tire, auto	111100	
TS205	Mounter/ demounter, truck tire	111100	
TS303	Wheel Balancer, Electronic, Fixed	111100	
LC251	Drop, utility, trapeze, with data	119010	
ST100	Rack, body panel, large	119010	
ST101	Rack, body panel, small	119010	
ST115	Rack, body glass	119010	
ST350	Workbench, heavy duty	119010	
VL806	Lift, vehicle, 4 post, mobile column, wireless	144500	N.I.C.
VL850	Lift, axle, scissor, 2 carriage, 60,000 lbs.	144500	N.I.C.
BR205	Charger, battery, portable	111100	Not shown on drawings
ES110	Workbench, electronics, anti-static top	111100	
SH101	Vise, combination, swivel base, 6"	111100	
SH221	Crimper, hydraulic hose	NIC	
SH291	Tank, parts cleaning, medium	111100	
SH332	Saw, cut-off, hydraulic hose	NIC	
SH580	Stand, engine/transmission, rolling	111100	Not shown on drawings
SH990	Scrubber, floor, riding	111100	Not shown on drawings
SH171	Dispenser, DEF, drum, portable	111100	Not shown on drawings
ST010	Bin unit, common, 66 opening	111100	
ST035	Cabinet, drawer, 59"	111100	
ST057	Cabinet, flammable materials, large	111100	
ST062	Cabinet, storage, shop	111100	
ST088	Ladder, safety, rolling, 10 step	111100	Not shown on drawings
ST110	Rack, gas cylinder, portable	111100	
ST120	Rack, pallet, w/ deck, 8'	111100	
ST156	Rack, tire, paratransit	111100	
ST165	Shelving unit, 18"	111100	
ST991	Pallet, containment	111100	
TS100	Cage, inflation, tire	111100	
TS215	Spreader, tire	111100	
WF030	Screen, welding	111100	Not shown on drawings
WF331	Welder, MIG, w/wire feed	111100	Not shown on drawings
WF400	Extractor, fume, portable	111100	Not shown on drawings
VW400	Washer, Vehicle, 4 Brush w/ Reclaim	115500	

SCHEDULE NOTES:

- 1. FOR ITEMS NOTED IN SCHEDULE AS "NOT SHOWN ON DRAWINGS" CONTRACTOR SHALL PROVIDE (1) EACH.
- 2. A COMPLETE LISTING OF ALL EQUIPMENT TO BE PROVIDED IS INCLUDED IN THE SPECIFICATIONS.

SHEET NO. 110



ADDENDUMS / REVISIONS
ADDENDUM 1

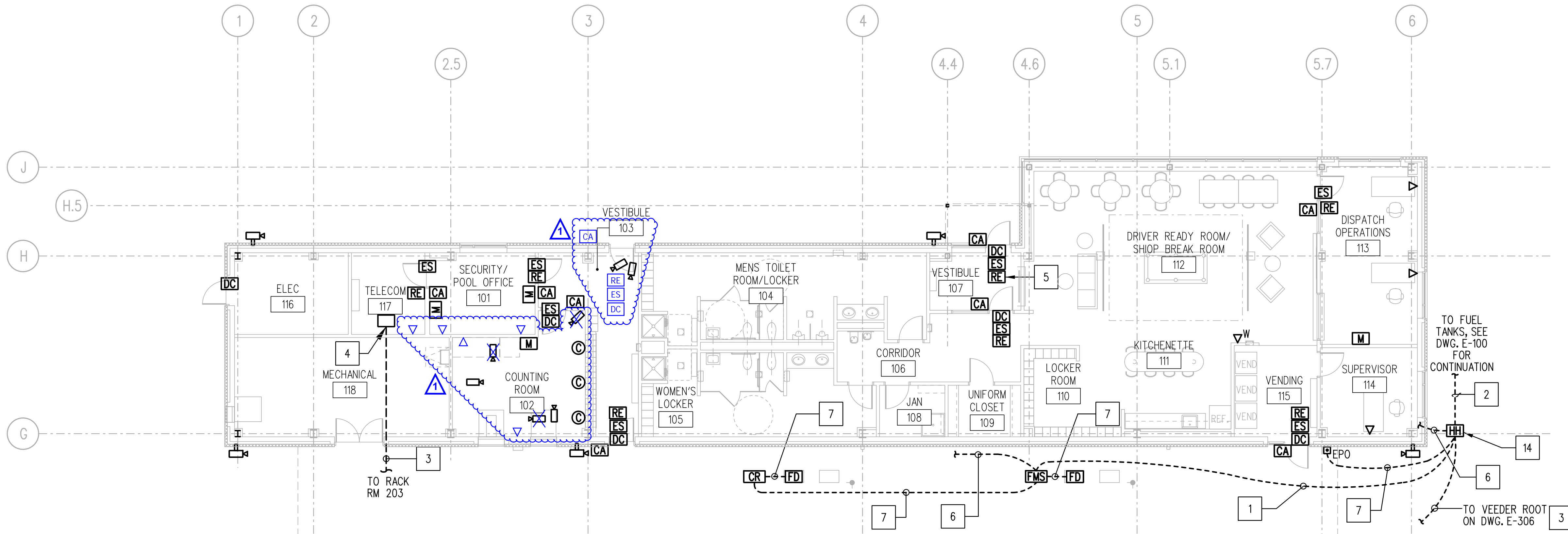
LEWES PARK & RIDE AND MAINTENANCE FACILITY - PHASE 2

CONTRACT	BRIDGE NO.
T20175.3109	
COUNTY	DESIGNED BY: NCL
SUSSEX	CHECKED BY: EJ

EQUIPMENT ABBREVIATIONS AND NOTES

SHEET NO.
110
TOTAL SHTS.
189

EL-001



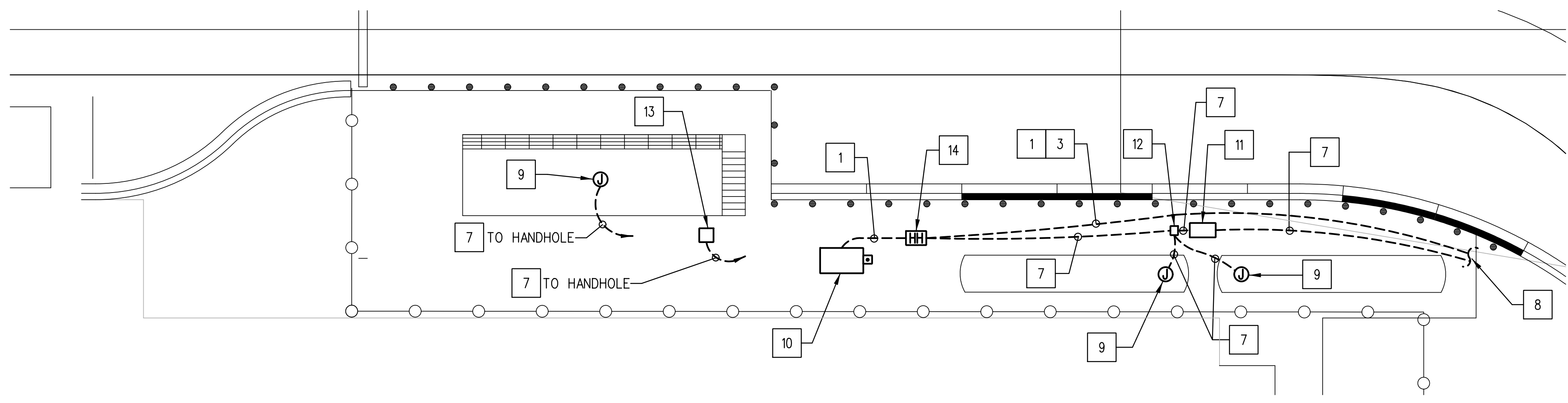
MATCH LINE - SEE E-306

MATCH LINE - SEE E-306

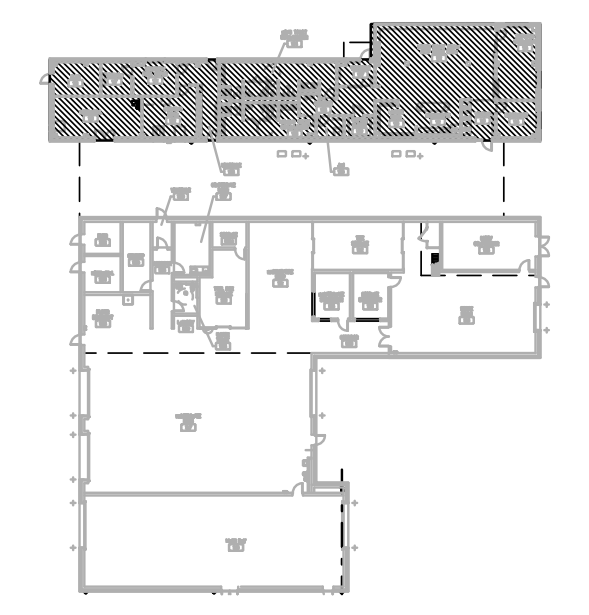
- GENERAL NOTES:**
- SEE DRAWING E-001 THRU E-003 FOR LEGEND, ABBREVIATIONS AND GENERAL NOTES.
 - COORDINATE EXACT CAMERA ANGLE AND VIEW WITH THE OWNER PRIOR TO FINAL ACCEPTANCE. ALL EXTERIOR CAMERAS SHALL BE WEATHERPROOF TYPE.
 - PROVIDE CLASSIFIED SEALS FOR ALL CONDUIT STUBUPS TO FUEL DISPENSING EQUIPMENT.
 - SEE DRAWINGS E-605, E-606, E-607 AND E-608 AND SPECIFICATIONS FOR INSTALLATION DETAILS AND WIRING REQUIREMENTS.
 - PROVIDE 3/4" CONDUIT FROM EACH SECURITY AND ACCESS CONTROL DEVICE BACK TO RECK IN ROOM 117.

- SPECIFIC NOTES:**
- 2" C. WITH PULL STRING.
 - (1) 4" C., (1) 2" C., (1) 1" C. WITH PULL STRING.
 - 4" C. WITH PULL STRING.
 - 44U FLOOR MOUNTED RACK.
 - CARD SWIPE TO RELEASE DOOR AND ACTIVATE OPERATOR. INTERIOR DOOR TO HAVE DELAYED RELEASE UNTIL EXTERIOR DOOR IS CLOSED AND SECURED.
 - 2" C. WITH PULL STRING TO TELECOM ROOM 117.
 - 1" C. WITH PULL STRING.
 - SEE DRAWING E-100 FOR CONTINUATION.
 - TANK, ACCESSORIES, ALARMS SENSORS.
 - TANK CONTROL CABINET.
 - PROPANE DISP.
 - PROPANE CONTROLLER.
 - FILL PORT.
 - NEW HANDHOLE. SEE DETAIL 7/E-601 WITH NO DIVIDER.

1 ELECTRICAL FLOOR PLAN - NORTH BUILDING - SPECIAL SYSTEMS
E-305 SCALE: 1/8" = 1'-0"



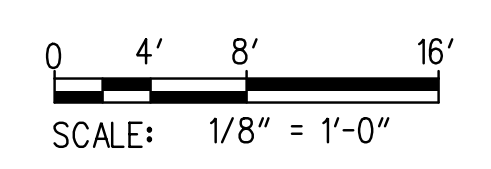
2 FUEL TANK AREA CONTROL/DATA PLAN
E-305 SCALE: 1/8" = 1'-0"



KEY PLAN
SCALE: N.T.S.

NO 9/20/19-019_CADD_Plane 11 Sheet Files CP01-90181004E-305.dgn
 27/2017 3:04:49 PM

ADDENDUM / REVISIONS
ADDENDUM 1

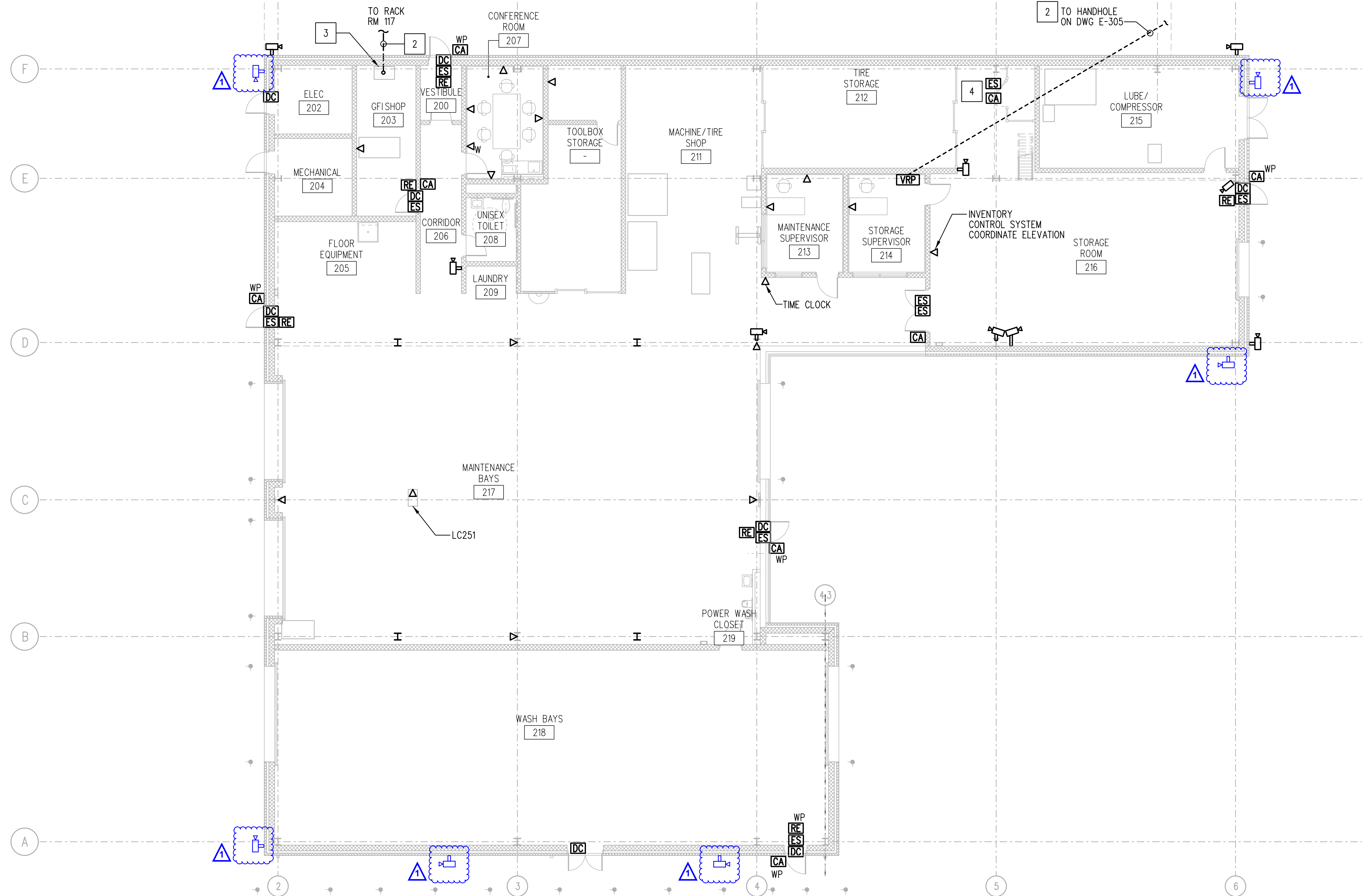


CONTRACT T201753109	BRIDGE NO.
COUNTY SUSSEX	DESIGNED BY: MSM/SMC
	CHECKED BY: AP

E-305
SHEET NO. 169
TOTAL SHTS. 189

MATCHLINE - SEE E-305

MATCHLINE - SEE E-305



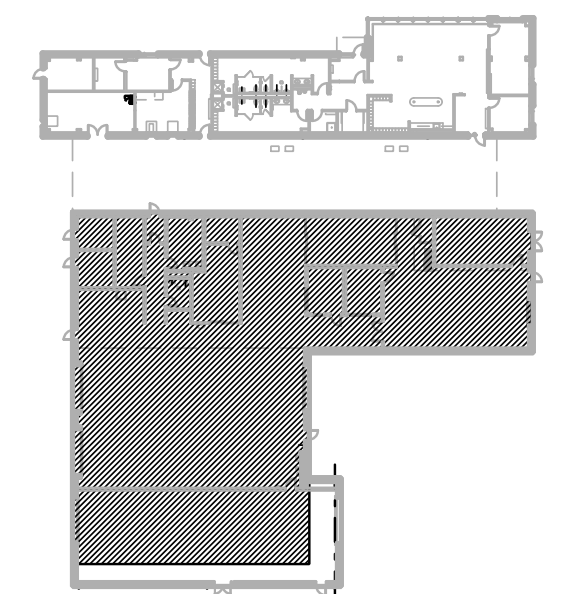
GENERAL NOTES:

1. SEE DRAWING E-001 THRU E-003 FOR LEGEND, ABBREVIATIONS AND GENERAL NOTES.
2. COORDINATE EXACT CAMERA ANGLE AND VIEW WITH THE OWNER PRIOR TO FINAL ACCEPTANCE. ALL EXTERIOR CAMERAS SHALL BE WEATHERPROOF TYPE.
3. PROVIDE CLASSIFIED SEALS FOR ALL CONDUIT STUB UPS TO FUEL DISPENSING EQUIPMENT.
4. SEE DRAWINGS E-605, E-606, E-607 AND E-608 AND SPECIFICATIONS FOR INSTALLATION DETAILS AND WIRING REQUIREMENTS.
5. PROVIDE 3/4" CONDUIT FROM EACH SECURITY AND ACCESS CONTROL DEVICE BACK TO RECK IN RM 203.

SPECIFIC NOTES:

- 1 1" C. WITH PULL STRING.
- 2 4" C. WITH PULL STRING.
- 3 24U RACK.
- 4 COORDINATE HEIGHTS WITH CAGE MANUFACTURER.

1 ELECTRICAL FLOOR PLAN - SOUTH BUILDING - SPECIAL SYSTEMS
E-306 SCALE: 1/8" = 1'-0"



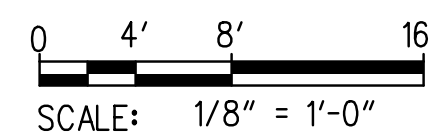
KEY PLAN
SCALE: N.T.S.

No 19018-019_CADD Phase 1 Sheet Files CP-01-30181004E-306.dgn
 27/2017 3:45:50 PM



ADDENDUM 1

ADDENDUMS / REVISIONS



**LEWES PARK & RIDE
AND MAINTENANCE FACILITY -
PHASE 2**

CONTRACT	T201753109	BRIDGE NO.	
COUNTY	SUSSEX	DESIGNED BY:	MSM/SMC
		CHECKED BY:	AP


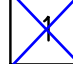
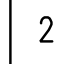
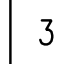
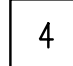
**ELECTRICAL FLOOR PLAN
SOUTH BUILDING
SPECIAL SYSTEMS**

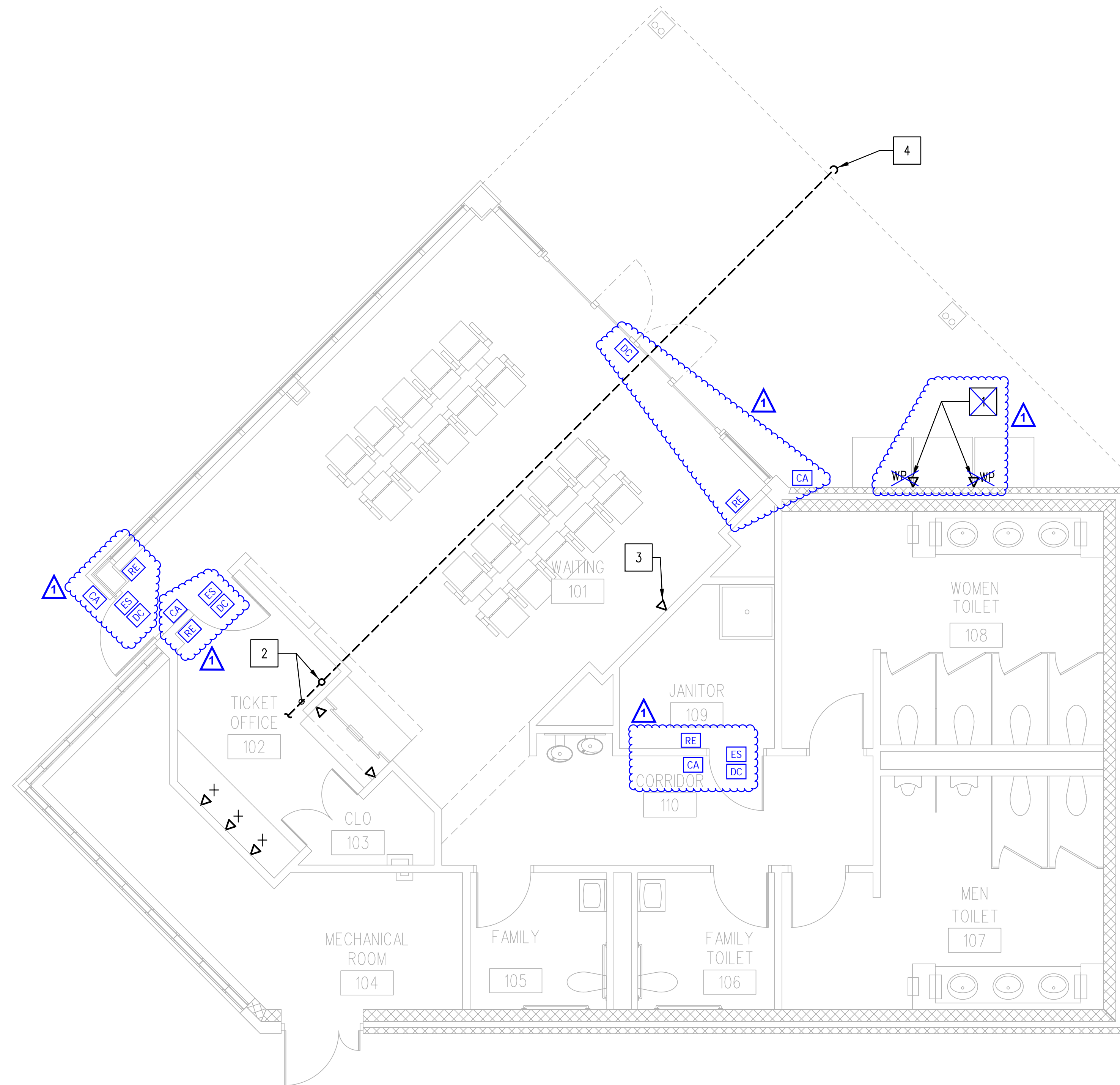
E-306
SHEET NO.
170
TOTAL SHTS.
189

DRAWING NOTES

1. SEE DWG. E-001 THRU E-003 FOR LEGEND, ABBREVIATIONS AND NOTES.
2. ALL ROUGH-IN PROVIDE 1" CONDUIT BACK TO IT RACK IN RM. 102.

CONSTRUCTION NOTES

-   PROVIDE DATA ROUGH-IN FOR CARD-PAYMENT AND-INVENTORY TRACKING EQUIPMENT FOR VENDING MACHINES.
-  2" C STUB UP TO IT RACK. CONDUIT ROUTED UNDERGROUND TO HANDHOLE. SEE SITE PLAN FOR ROUTING.
-  COORDINATE EXACT LOCATION OF ROUGH-IN WITH SMART WALL DISPLAY SYSTEM.
-  PROVIDE (3) 1" C WITH PULL STRING UNDERGROUND AND CAP FOR FUTURE CANOPY INSTALLATION.



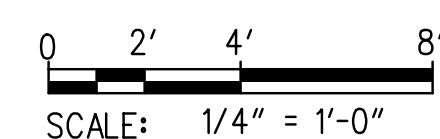
1 SPECIAL SYSTEM PLAN
E-308 SCALE: 1/4" = 1'-0"

MS 19/05-019_CADDY Page # Sheet Files \CP02-90181018E-308.dgn
 02/27/2017 3:44:27 PM



 **ADDENDUM 1**

ADDENDUMS / REVISIONS



**LEWES PARK & RIDE
AND MAINTENANCE FACILITY -
PHASE 2**

CONTRACT	BRIDGE NO.
T201753109	
COUNTY	DESIGNED BY: MSM
SUSSEX	CHECKED BY: IHK

**SPECIAL SYSTEM
FLOOR PLAN -
VISITOR CENTER**



E-308
SHEET NO.
172
TOTAL SHTS.
189